

**All Units come with a Concrete Front Porch, Built-In Pantry, Island with Bar Top, McEwan Ceramic and McEwan Laminate Flooring as per Plan**

**End Units A - \$239,900**

1546 SqFt with 3 Bedrooms and 2 ½ Bathrooms

**Inside Units B & D - SOLD**

1554 SqFt with 3 Bedrooms and 2 ½ Bathrooms

**Inside Unit C - \$219,900**

1317 SqFt with 2 Bedrooms and 1 ½ Bathrooms

**McEwan Homes**

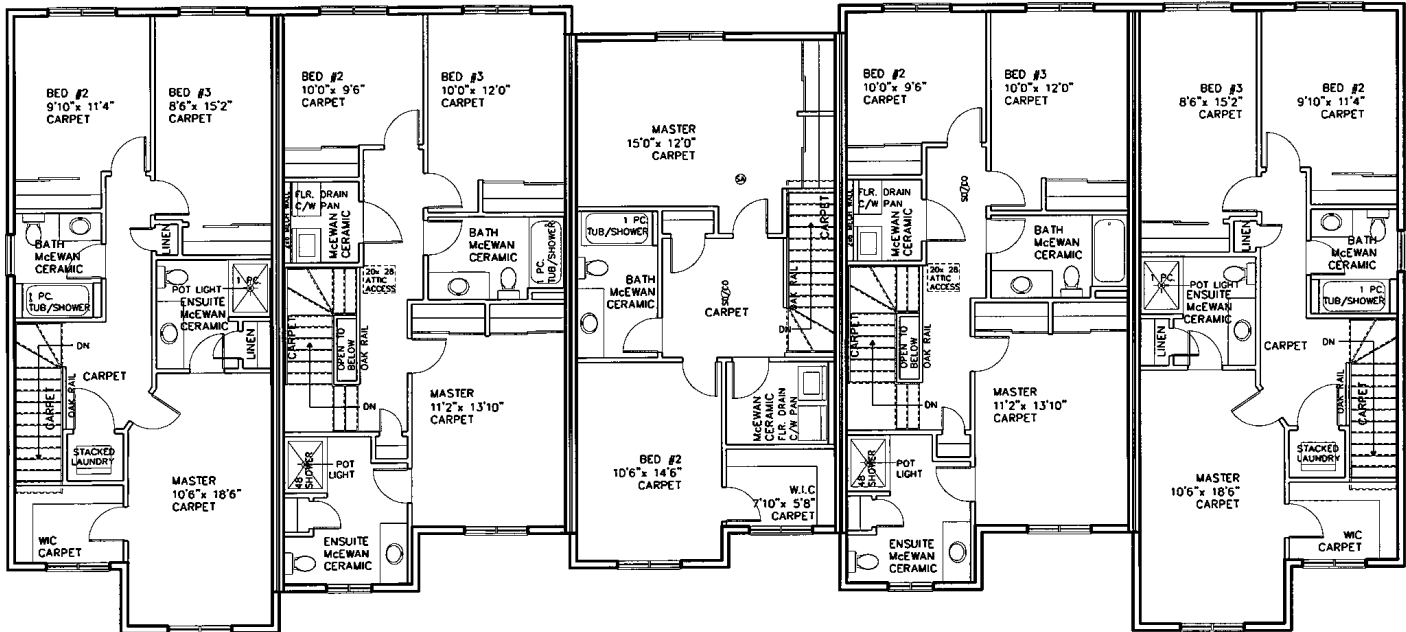
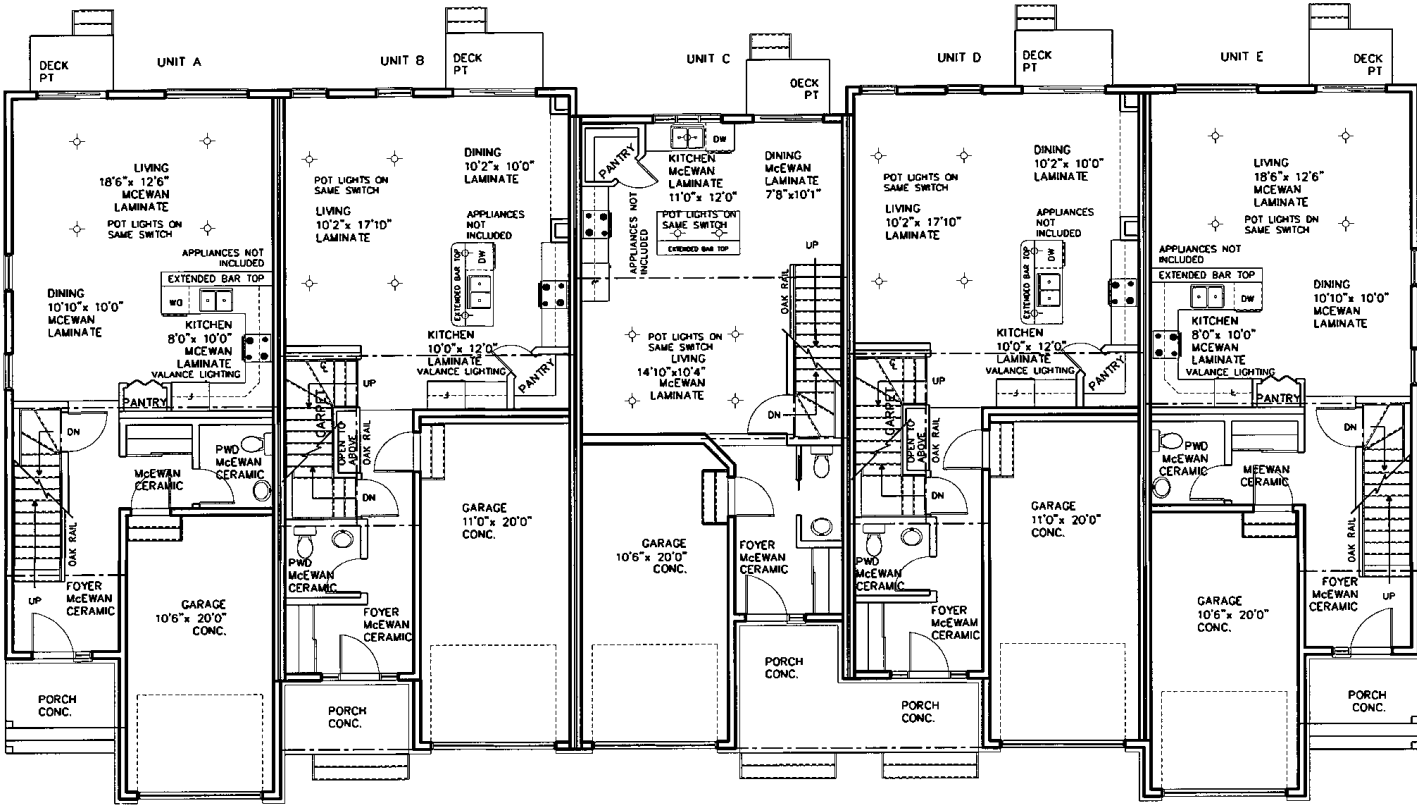
PO Box 249 Arnprior, ON K7S 3H6

Phone: (613) 623-6589 Fax: (613) 623-2526

[www.mcewanhomes.com](http://www.mcewanhomes.com)

**The Waverly  
Two-Story  
Townhome**

# The Waverly - Block K



Phone: (613) 623-6589



www.mcewanhomes.com